

Strand									Life at molecular, cellular and tissue level						
Topic									Biodiversity of micro-organisms						
Type of question									Multiple choice						
LO1 AS			LO2 AS			LO3 AS			Level			Section			
1	2	3	1	2	3	1	2	3	Easy	Med	Hard	A	B	C	
				✓					✓			✓			

Members of the Kingdom Fungi

- A. are autotrophic
- B. are prokaryotic
- C. contain chlorophyll
- D. have chitin in their cell walls

Answer: D

Strand									Life at molecular, cellular and tissue level						
Topic									Biodiversity of micro-organisms						
Type of question									Multiple choice						
LO1 AS			LO2 AS			LO3 AS			Level			Section			
1	2	3	1	2	3	1	2	3	Easy	Med	Hard	A	B	C	
				✓					✓			✓			

Which of the following cell structures are found in fungal cells but not in animal cells?

- A. cell membrane
- B. cell wall
- C. nucleus
- D. cytoplasm

Answer: B

Strand									Life at molecular, cellular and tissue level						
Topic									Biodiversity of micro-organisms						
Type of question									Multiple choice						
LO1 AS			LO2 AS			LO3 AS			Level			Section			
1	2	3	1	2	3	1	2	3	Easy	Med	Hard	A	B	C	
				✓					✓			✓			

Members of the fungal kingdom reproduce

- A. asexually
- B. sexually
- C. neither A nor B
- D. both A and B

				✓					✓			✓		
--	--	--	--	---	--	--	--	--	---	--	--	---	--	--

Which of the following terms best describes a tapeworm living inside a human intestine?

- A. host
- B. pathogen
- C. parasite
- D. symbiont

Answer: C

Strand			Life at molecular, cellular and tissue level											
Topic			Disease Management											
Type of question			Multiple choice											
LO1 AS			LO2 AS			LO3 AS			Level			Section		
1	2	3	1	2	3	1	2	3	Easy	Med	Hard	A	B	C
				✓					✓			✓		

Which statement best describes the relationship between a parasite and its host?

- A. the host is harmed while the parasite benefits
- B. the parasite is harmed while the host benefits
- C. both host and parasite benefit
- D. the parasite benefits and the host is not affected at all

Answer: A

Strand			Life at molecular, cellular and tissue level											
Topic			Disease Management											
Type of question			Multiple choice											
LO1 AS			LO2 AS			LO3 AS			Level			Section		
1	2	3	1	2	3	1	2	3	Easy	Med	Hard	A	B	C
				✓					✓			✓		

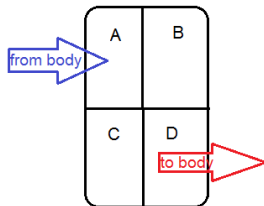
Which statement is false concerning the relationship between a parasite and its host?

- A. the host is harmed while the parasite benefits
- B. the parasite is a predator
- C. parasites can occur inside or on the surface of a host
- D. it is not in the interests of the parasite to kill its host

Answer: B

Strand			Life processes in plants and animals											
Topic			Transport in animals											
Type of question			Multiple choice											
LO1 AS			LO2 AS			LO3 AS			Level			Section		
1	2	3	1	2	3	1	2	3	Easy	Med	Hard	A	B	C
			✓	✓					✓			✓		

In the following diagram, which chamber will the pulmonary artery leave from?

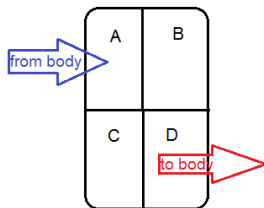


- A. A
- B. B
- C. C
- D. D

Answer: C

Strand			Life processes in plants and animals											
Topic			Transport in animals											
Type of question			Multiple choice											
LO1 AS			LO2 AS			LO3 AS			Level			Section		
1	2	3	1	2	3	1	2	3	Easy	Med	Hard	A	B	C
			✓	✓					✓			✓		

In the following diagram, which chambers will carry oxygenated blood?



- A. A and B
- B. B and D
- C. C and D
- D. A and C

Answer: B

Strand			Life processes in plants and animals											
Topic			Transport in animals											
Type of question			Multiple choice											
LO1 AS			LO2 AS			LO3 AS			Level			Section		
1	2	3	1	2	3	1	2	3	Easy	Med	Hard	A	B	C
				✓					✓			✓		

Which chamber of the heart pumps oxygenated blood out to the different parts of the body?

- A. right atrium
- B. left atrium
- C. right ventricle
- D. left ventricle

Answer: D

Strand			Life processes in plants and animals											
Topic			Transport in animals											
Type of question			Multiple choice											
LO1 AS			LO2 AS			LO3 AS			Level			Section		
1	2	3	1	2	3	1	2	3	Easy	Med	Hard	A	B	C
				✓					✓			✓		

Which chamber of the heart receives oxygenated blood from the lungs?

- A. right atrium
- B. left atrium
- C. right ventricle
- D. left ventricle

Answer: B

Strand			Life processes in plants and animals											
Topic			Transport in animals											
Type of question			Multiple choice											
LO1 AS			LO2 AS			LO3 AS			Level			Section		
1	2	3	1	2	3	1	2	3	Easy	Med	Hard	A	B	C
				✓					✓			✓		

Which chamber of the heart receives deoxygenated blood from the body?

- A. right atrium
- B. left atrium
- C. right ventricle
- D. left ventricle

Answer: A

Strand			Life processes in plants and animals											
Topic			Transport in animals											
Type of question			Multiple choice											
LO1 AS			LO2 AS			LO3 AS			Level			Section		
1	2	3	1	2	3	1	2	3	Easy	Med	Hard	A	B	C
				✓					✓			✓		

Which part of the heart separates the oxygenated and deoxygenated blood?

- A. coronary vessels
- B. left atrium
- C. septum
- D. valves

Answer: C

Strand			Life processes in plants and animals											
Topic			Transport in animals											
Type of question			Multiple choice											
LO1 AS			LO2 AS			LO3 AS			Level			Section		
1	2	3	1	2	3	1	2	3	Easy	Med	Hard	A	B	C
				✓					✓			✓		

What substance is derived from tissue fluid and flows in a set of vessels that are not arteries or veins?

- A. blood
- B. lymph
- C. plasma
- D. cell liquid

Answer: B

Strand			Life processes in plants and animals											
Topic			Transport in animals											
Type of question			Multiple choice											
LO1 AS			LO2 AS			LO3 AS			Level			Section		
1	2	3	1	2	3	1	2	3	Easy	Med	Hard	A	B	C
				✓					✓			✓		

Via which vessel is lymph returned to the blood circulatory system?

- A. subclavian vein
- B. carotid artery

- C. jugular vein
- D. superior vena cava

Answer: A

Strand			Life processes in plants and animals											
Topic			Transport in animals											
Type of question			Multiple choice											
LO1 AS			LO2 AS			LO3 AS			Level			Section		
1	2	3	1	2	3	1	2	3	Easy	Med	Hard	A	B	C
				✓					✓			✓		

Which body system is associated with the purification of blood and the removal of disease organisms from the body?

- A. blood circulatory system
- B. pulmonary system
- C. excretory system
- D. lymphatic system

Answer: D

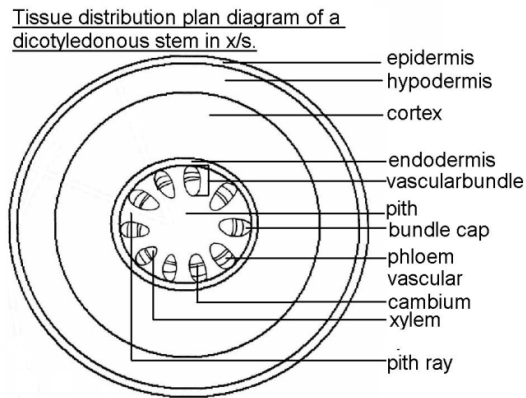
Strand			Life processes in plants and animals											
Topic			Transport in animals											
Type of question			Multiple choice											
LO1 AS			LO2 AS			LO3 AS			Level			Section		
1	2	3	1	2	3	1	2	3	Easy	Med	Hard	A	B	C
				✓					✓			✓		

Which body fluid is directly associated with the immune system?

- A. saliva
- B. semen
- C. lymph
- D. blood

Answer: C

Strand			Life Processes in Plants and Animals											
Topic			Support and movement in plants											
Type of question			Multiple choice											
LO1 AS			LO2 AS			LO3 AS			Level			Section		
1	2	3	1	2	3	1	2	3	Easy	Med	Hard	A	B	C
			✓	✓						✓		✓		



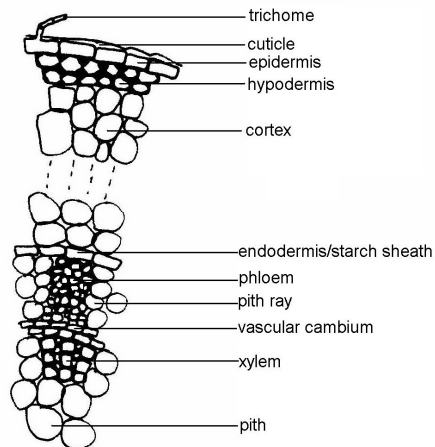
Which layer of tissue is involved with secondary growth?

- A. cortex
- B. hypodermis
- C. cambium
- D. pith

Answer: C

Strand			Life Processes in Plants and Animals											
Topic			Support and movement in plants											
Type of question			Multiple choice											
LO1 AS			LO2 AS			LO3 AS			Level			Section		
1	2	3	1	2	3	1	2	3	Easy	Med	Hard	A	B	C
			✓	✓						✓		✓		

Cell detail diagram of part of a dicot stem in x/s



Which tissue is involved with secondary growth of the dicot stem?

- A. endodermis
- B. hypodermis
- C. xylem
- D. vascular cambium

Answer: D

Strand			Life Processes in Plants and Animals											
Topic			Support and movement in plants											
Type of question			Multiple choice											
LO1 AS			LO2 AS			LO3 AS			Level			Section		
1	2	3	1	2	3	1	2	3	Easy	Med	Hard	A	B	C
			✓	✓					✓			✓		

Which statement best explains the following observation?

A tree is planted in year 1. Its height and diameter are measured and recorded. In year 2, these measurements are repeated and it is found that tree has grown 15cm in height and 4cm in diameter.

- A. The height measurement increased due to the activity of primary meristematic tissue at the terminal bud and the diameter measurement increased due to activity of the secondary meristematic tissue of the cambium.
- B. The height measurement increased due to the activity of the secondary meristematic tissue of the cambium and the diameter measurement increased due to activity of primary meristematic tissue at the terminal bud.
- C. Both measurements increased due to the activity of vascular cambium.
- D. The measurements increased because the plant was fed fertiliser and plant hormones.

Answer: A

Strand			Life Processes in Plants and Animals											
Topic			Support and movement in plants											
Type of question			Multiple choice											
LO1 AS			LO2 AS			LO3 AS			Level			Section		
1	2	3	1	2	3	1	2	3	Easy	Med	Hard	A	B	C
			✓	✓					✓			✓		

What part of the plant is responsible for producing the bark on tree trunks?

- A. apical meristem
- B. xylem
- C. cork cambium
- D. vascular cambium

Answer: C

Strand			Life Processes in Plants and Animals											
Topic			Support and movement in plants											
Type of question			Multiple choice											
LO1 AS			LO2 AS			LO3 AS			Level			Section		
1	2	3	1	2	3	1	2	3	Easy	Med	Hard	A	B	C
			✓	✓					✓			✓		

The meristematic tissue of plants constantly produce new cells by the process of

- A. mitosis
- B. meiosis
- C. conjugation
- D. germination

Answer: A

Strand			Diversity, change and continuity											
Topic			Modification of body parts & biogeography											
Type of question			Multiple choice											
LO1 AS			LO2 AS			LO3 AS			Level			Section		
1	2	3	1	2	3	1	2	3	Easy	Med	Hard	A	B	C
				✓					✓			✓		

Which group of animals is characterised by radially symmetrical bodies with two layers of cells in the body wall?

- A. jellyfish
- B. tapeworms
- C. earthworms
- D. snails

Answer: A

Strand			Diversity, change and continuity											
Topic			Modification of body parts & biogeography											
Type of question			Multiple choice											
LO1 AS			LO2 AS			LO3 AS			Level			Section		
1	2	3	1	2	3	1	2	3	Easy	Med	Hard	A	B	C
				✓					✓			✓		

Which phylum of animals is characterised by bilateral symmetry, segmentation and possession of a coelom?

- A. cnidaria
- B. porifera

- C. annelida
- D. echinodermata

Answer: C

Strand			Diversity, change and continuity											
Topic			Modification of body parts & biogeography											
Type of question			Multiple choice											
LO1 AS			LO2 AS			LO3 AS			Level			Section		
1	2	3	1	2	3	1	2	3	Easy	Med	Hard	A	B	C
				✓					✓			✓		

Members of the Chordata are characterised by possession of

- A. stinging cells
- B. an exoskeleton
- C. a vertebral column
- D. radial symmetry

Answer: C

Strand			Diversity, change and continuity											
Topic			Modification of body parts & biogeography											
Type of question			Multiple choice											
LO1 AS			LO2 AS			LO3 AS			Level			Section		
1	2	3	1	2	3	1	2	3	Easy	Med	Hard	A	B	C
				✓					✓			✓		

Alternation of generations in plants means that

- A. the plant alternates between autotrophic and heterotrophic nutrition
- B. the plant reproduces asexually
- C. the plant alternates between a haploid and a diploid stage
- D. all of these

Answer: C

Strand			Diversity, change and continuity											
Topic			Modification of body parts & biogeography											
Type of question			Multiple choice											
LO1 AS			LO2 AS			LO3 AS			Level			Section		

1	2	3	1	2	3	1	2	3	Easy	Med	Hard	A	B	C
				✓					✓			✓		

The group of organisms that most relies on water for reproduction is

- A. angiosperms
- B. gymnosperms
- C. ferns
- D. mosses

Answer: D

Strand			Diversity, change and continuity											
Topic			Modification of body parts & biogeography											
Type of question			Multiple choice											
LO1 AS			LO2 AS			LO3 AS			Level			Section		
1	2	3	1	2	3	1	2	3	Easy	Med	Hard	A	B	C
				✓					✓			✓		

The large flightless bird that has gone extinct is called a/an

- A. rhea
- B. ostrich
- C. moa
- D. emu

Answer: C

Strand			Diversity, change and continuity											
Topic			Modification of body parts & biogeography											
Type of question			Multiple choice											
LO1 AS			LO2 AS			LO3 AS			Level			Section		
1	2	3	1	2	3	1	2	3	Easy	Med	Hard	A	B	C
				✓					✓			✓		

The fact that large flightless birds such as emus, rheas and ostriches are found on three different continents is often offered as proof of

- A. evolution
- B. natural selection
- C. continental drift
- D. extinction

Answer: C

Strand			Diversity, change and continuity											
Topic			Modification of body parts & biogeography											
Type of question			Multiple choice											
LO1 AS			LO2 AS			LO3 AS			Level			Section		
1	2	3	1	2	3	1	2	3	Easy	Med	Hard	A	B	C
				✓					✓			✓		

In which location will the large flightless bird called an emu be found?

- A. South America
- B. Africa
- C. New Zealand
- D. Australia

Answer: D

Strand			Diversity, change and continuity											
Topic			Modification of body parts & biogeography											
Type of question			Multiple choice											
LO1 AS			LO2 AS			LO3 AS			Level			Section		
1	2	3	1	2	3	1	2	3	Easy	Med	Hard	A	B	C
				✓					✓			✓		

In which location will the large flightless bird called a rhea be found?

- A. South America
- B. Africa
- C. New Zealand
- D. Australia

Answer: A